



Duo-Safety Ladder Corporation

513 W 9th Ave - PO Box 497 Oshkosh WI 54903-0497
Toll Free # 877-386-5377 Ph # 920-231-2740 Fax # 920-231-2460
www.duosafety.com mail@duosafety.com

Instructions for Replacing Prong Feet with Safety Shoes Aluminum MF Ladders

Remove existing prong foot by punching the rivet stems then drilling out the rivets with a 1/4" drill bit. 2 empty holes will be left on each side rail. Fill these with the pop rivets. Also drill out 3 ea compression rivets on the inside plate for each rail. (Refer to circled rivets in photo 1)

Note: 1/pr safety shoes with plates will come assembled. (See photo 2)
Remove nuts from bolts on shoe plates (photo 2A), do not remove nut and bolt on safety shoe body (photo 2B).

Using the shoe plates as a template, slide one safety shoe with plates onto bottom rail and mark the bottom inside plate of ladder with the 3 ea holes to be drilled. (refer to diagram for proper placement of plate)

Drill through both plate and rail using a 1/4" drill bit. Repeat for other side.

Slide shoe plates over ladder rail matching with drilled holes. Insert 2 ea 1/4" x 2" hex head bolts in the top two drilled holes through shoe plates and ladder rail from outside to inside of ladder while inserting 2 ea spacers in between shoe plates inside the rail. Note, the spacers will fit very tight and you may have to hammer the spacer to slightly compress it before installing. Tighten bolts & nuts snug.

Insert 1ea 1/4" x 2" hex head bolt through middle hole on shoe plate. Tighten bolt & nut snug.

After tightening the 3 bolts, you can snip the bolt down if you wish, then peen ends of bolts over with hammer.

Check tightness of bolt on safety shoe body and make sure the safety shoe moves snug on the plates.

If you have a question, please call our office.

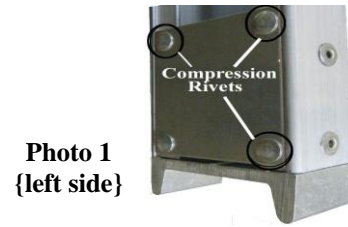


Photo 1
{left side}

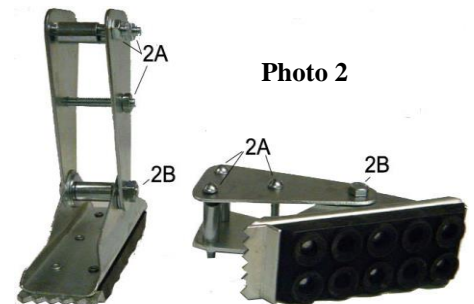


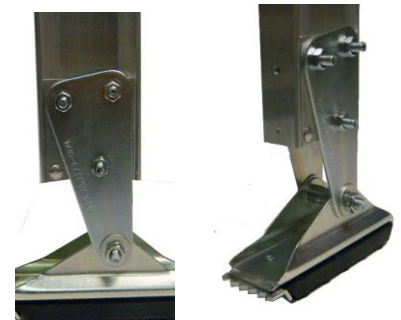
Photo 2



{Outside view -
left side}



{Inside view -
left side}



{Shown assembled to ladder - left side view}